

# Cumberland Reel

♩=180

Secundo



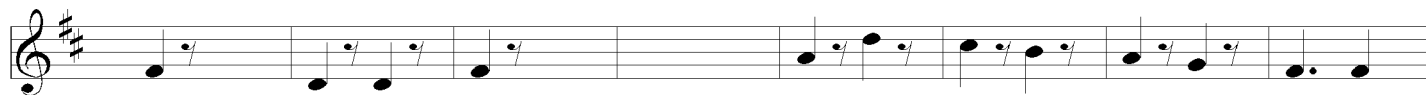
D F# G D F# Em A7 D F# G B D F# Bm A A7 D



D F# G D F# Em A7 D F# G B D F# Bm A A7 D



D D D A Bm Bm Bm E7 A A7 C



Bm A G D F# Bm A G D F# A C# E7 B A Em G D F# A7 E D